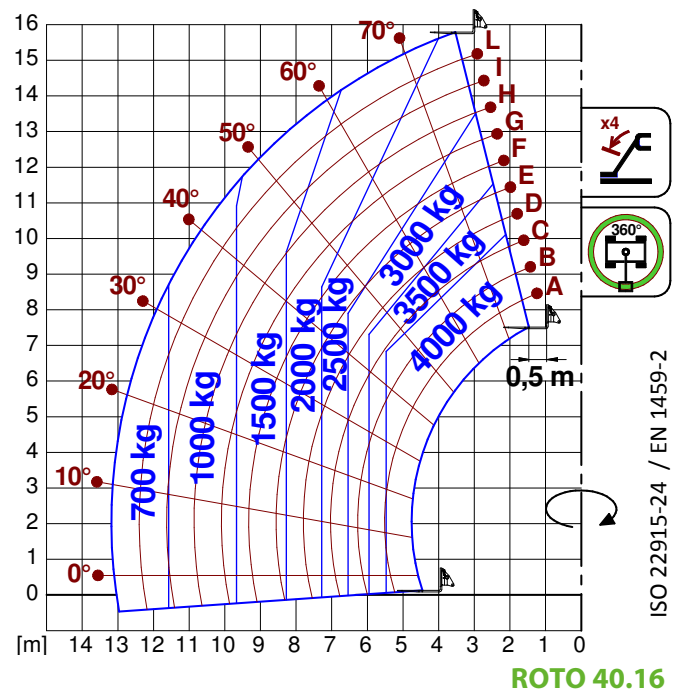




ROTO 40.16
ROTO 40.16 S



PERFORMANCE AND FEATURES	ROTO 40.16	ROTO 40.16 S	
PERFORMANCE			
Total unladen weight (kg)	12900	13000	
Maximum capacity (kg)	4000	4000	
Lifting height (m)	15,8	15,8	
Maximum reach (m)	13,2	13,2	
Maximum operating height (m)	10,1	10,1	
Maximum operating reach (m)	5,5	5,5	
Capacity at maximum height (kg)	2500	2500	
Capacity at maximum reach (kg)	700	700	
Lateral boom movement (mm)	-	-	
Tilting correction (%)	-	+/-10, +/-8	
Boom sections	3	3	
POWERTRAIN			
Turbo motor	Deutz TCD3.6	Deutz TCD3.6	
Displacement/cylinders	3600/4	3600/4	
Engine Power (kW/HP)	55,4/74	85/115	
Anti-pollution technology	EURO IIIB, DOC	EURO IV, SCR+DOC	
Reversible fan	-	-	
Maximum speed (km/h)	25	40	
Fuel tank (l)	140	140	
AdBlue tank (l)	-	18	
Hydrostatic transmission	● - 2V	● - 2V	
EPD	●	●	
Axles	Drop portal	Drop portal	
Reduction hub	RR700	RR700	
Machine brakes	Dry discs	Dry discs	
Automatic parking brake	●	●	
HYDRAULIC			
Hydraulic pump	LS + FS	LS + FS	
Flow rate/pressure (l/min – bar)	103 - 250	103 - 250	
Hydraulic tank	162	162	
Hydraulic outlet at the top of the boom	●	●	
Rear hydraulic outlets	-	-	
CAB			
Cab configuration	PREMIUM	PREMIUM	
MCDC	-	-	
FOPS LIV II cab	●	●	
ROPS cab	●	●	
Cab commands	Electronic joystick control	Electronic joystick control	
Tilting Cab	-	-	
Reverse shuttle	Dual Reverse	Dual Reverse	
CONFIGURATION			
Cab suspension	-	-	
Boom suspension	-	-	
Suspension on axles	-	●	
Work headlights on cab	○	○	
Sun blind	●	●	
Tac-lock	●	●	
Provision for a platform	●	●	
Two floating forks	●	●	
Inching-Control	-	-	
Four-wheel drive	●	●	
Four-wheel steering	●	●	
Three steering modes	●	●	
Standard tyres	400/70-20"	400/70-20"	
Optional tyres	405/70-R20	405/70-R20	
Stabilisers	On/Off	On/Off	
Turret rotation	415°	415°	
Type approval as an agricultural tractor	-	-	
Approval with PNEUMATIC braking	-	-	
Approval with HYDRAULIC braking	-	-	
PTO	-	-	
3-point linkage	-	-	
DIMENSION			
Width (mm)	2240	2240	
Height (mm)	3010	3010	
Length (mm)	6280	6280	
Wheelbase (mm)	2860	2860	



GLOSSAR

- SCR
- DPF
- DOC
- EGR
- 1-2V
- CVTronic
- EPD
- EPD Plus
- EPD Top
- Gear
- LS
- LS+FS
- Kabine ECO/PREMIUM
- MCDC
- FOPS
- ROPS
- Finger Touch
- Dual Reverse
- Tac-lock

Selective Catalyst Reduction, solution used for the reduction of NOx in the exhaust gases through the injection of a liquid - UREA (AdBlue) - into the exhaust gases.

Diesel Particulate Filter, a solution used to reduce fine particle emissions in exhaust gases

Diesel Oxidation Catalyst, a solution used to reduce carbon monoxide (CO) and hydrocarbons in exhaust gases

Exhaust Gas Recirculation, a solution used to reduce NOx in exhaust gases by recirculating gas inside the combustion chamber of the engine.

1 or 2 speed **Merlo gearbox**

Continuous variation Merlo gearbox, for constant acceleration without loss of torque

Eco Power Drive, Merlo electronically-controlled hydrostatic transmission Electronic, enables effective RPM management in order to reduce overall fuel consumption by the machine

In addition to the **EPD** Control, it is also possible to work using Speed Control (maintaining a constant travel speed) and Heavy Load (management of RPM in order to maximise performance for tasks such as: bucketing operations, heavy duty unloading, etc.)

In addition to the **EPD Plus** control function, this enables the RPM to be managed directly using the joystick

Fixed displacement pump with gears, combined with an open centre hydraulic distributor

Variable displacement pump with **Load Sensing** control, combined with a closed centre hydraulic distributor

Variable displacement pump with **Load Sensing** control, combined with a closed centre hydraulic distributor equipped with solenoid valves and **Flow Sharing** control.

MODULAR type cabin with simplified or PREMIUM equipment

Merlo Dynamic Load Control, electronic control of the machine's anti-overflow system.
 • **Light**: Simplified version; • **Complete**: Version with display in cab.

Falling object protective structure, the system which shields the operator from heavy objects falling onto the cab. Two levels:
 • **FOPS Liv I**: Object with a weight of 45 kg falling from 3 metres • **FOPS Liv II**: Object with a weight of 227 kg falling from 5.2 metres

Roll-over protection system (or roll-over protection structure), the system that protects the operator if the vehicle rolls over

Driving direction inversion system mounted on the steering column

Dual driving direction inversion system, on both the steering column and the joystick

Hydraulic attachment clamping system controlled from the cab



MERLO S.P.A.

Via Nazionale, 9
12010 S. Defendente di Cervasca
(Cuneo) Italia

Tel. +39 0171 614111

Fax +39 0171 684101

info@merlo.com

www.merlo.com

